

# South Carolina Speech-Language-Hearing Association Annual Convention



February 16-18, 2012  
Kingston Plantation  
Myrtle Beach, South Carolina



I am excited to welcome you to the 54th Annual SCSHA Convention to be held at Kingston Plantation in beautiful Myrtle Beach, South Carolina February 16-18, 2012. I hope your experience is both educational and rejuvenating.

We have invited esteemed leaders in speech-language pathology and audiology to present the best and latest research-based practices to help you accelerate your career. Our highlighted speakers and presentations include:

- **Dr. Dolores Battle** – *The World is Not Flat: Preparing Speech-Language Pathologists to Serve Culturally and Linguistically Diverse Clients at Home and in the World and What the Rwandan Genocide, Holocaust and Natural Disasters Have Taught the World About Persons With Disabilities*
- **Ms. Janice Brannon** – *Multi-State Telepractice—What’s the Catch?*
- **Dr. Elizabeth Crais** – *Identifying and Assessing Infants and Toddlers At-Risk for Autism Spectrum Disorders* – **Short Course Presenter**
- **Ms. Denise Dougherty** – *Making the Leap Into Private Practice and End of Life: PEG Tube Decisions*
- **Mr. Perry Flynn** – *Conducting Educationally Relevant Evaluations and Writing Educationally Relevant IEPs and Educationally Relevant Service Delivery: Tying SLP Services to the Core Content Standard*
- **Ms. Ellayne Ganzfried** – *Aphasia Advocacy: Tools for Community Outreach, Education and Increased Awareness*
- **Ms. Sue Hale** – *Clinical Education: Changing Supervisory Roles and Counseling: Communicating With Families*
- **Dr. Kelly Hall** – *Pediatric Dysphagia and Feeding Disorders: A New Role for the School-Based SLP and Management of Child Voice Disorders*
- **Ms. Laurie Alban Havens** – *Getting Services Covered – The Changing Faces of Reimbursement*
- **Dr. Alan Kamhi** – *Creating Proficient Readers and Comprehenders* – **Short Course Presenter**
- **Ms. Carol Koch** – *Intervention for Speech Sound Disorders: Beyond the Basics*
- **Ms. Sarah McCulloh, Ms. Erin Meece and Ms. Nikki Reid** – *Whole Body Connected: Take a Look*
- **Dr. Mark Parker** – *Biotechnology in the Treatment of Hearing Loss: Stem Cell and Gene Therapy*
- **Ms. Keli Richmond** – *Simultaneously Improve Speech Intelligibility and Establish Literacy Skills With Orthographic Instruction!*
- **Ms. Theresa Rodgers** – *The 3 R’s of Ethical Decision-Making: Recognizing, Reporting and Resolving and Advocating for the Professions – Strategies for Member Success*
- **Ms. Cathy Runnels** – *Building the Bridge Between Accent Modification Training and Public Speaking: Overlapping Training for the SLP*
- **Nancy Telian** – *Merging Phonemic Awareness and Phonics Within the RtI Model of Instruction and Johnny Reads CVC Words: Now What? Advanced Word Reading and Spelling*

In addition to dynamic sessions, you will learn how to find and fuel your leadership voice as you enjoy our keynote address, *Our Two Professions: Past and Future*, by **Dr. Daniel Boone**, Professor Emeritus in the Speech, Language and Hearing Department at the University of Arizona, former President of the American Speech-Language-Hearing Association and author of numerous textbooks and voice programs used throughout the world.

Come expecting an exceptional opportunity to network with experienced practitioners, inspire emerging speech-language pathologists and audiologists and reconnect with peers. Plus, earn up to 1.75 CEUs.

Benefit from everything the Convention has to offer. To learn more about the informative sessions, high-powered speakers and exciting and rewarding volunteer opportunities, visit [www.scscha.com](http://www.scscha.com). All levels of expertise are welcome, from beginner to expert. Don't let this opportunity pass you by!

I look forward to collaborating with you in Myrtle Beach to generate the momentum we need to **LEAP**.

*Kyndra*  
Kyndra Ford, 2012 SCSHA Convention Chair

SCSHA Office: 701 Gervais Street | Suite 150-206 | Columbia, SC 29201  
Phone: 888-729-3717 | Fax: 888-729-3489 | E-mail: [scsha@scsha.com](mailto:scsha@scsha.com) [www.scscha.com](http://www.scscha.com)



# SCSHA Convention Schedule

## Wednesday, February 15

### Events

4:30 pm - 5:00 pm	Executive Board Meeting
5:00 pm - 6:30 pm	Council Meeting
7:00 pm - 9:00 pm	Convention Registration
7:00 pm - 9:00 pm	Exhibitor Set-Up

## Thursday, February 16

### Events

7:15 am - 5:30 pm	Convention Registration
7:30 am - 5:30 pm	Exhibits Open
9:30 am - 10:00 am	Refreshment Break/Door Prizes/Silent Auction
12:00 pm - 1:00 pm	Lunch 'n Learn: SCSHA Member Caucuses
2:00 pm - 4:00 pm	Poster Sessions
3:00 pm - 3:30 pm	Refreshment Break/Door Prizes/Silent Auction
6:30 pm - 8:00 pm	Alumni Receptions

### Thursday's Sessions

#### 8:00 am - 9:30 am

##### Highlighted Presentation

###### Session 1

###### Multi-Professional Topic

*Making the Leap Into Private Practice*, Denise Dougherty, MA, CCC-SLP, MFT

Making the transition to private practice can be a stressful one. The key to the process is planning. This session will discuss how to lay the foundation for a successful practice, what needs to be considered and what consultations can be key to a successful business.

###### Session 2

###### SLP-Pediatric Topic

*Babies and Autism: Update for 2011*, Sally Asquith, MS, CCC-SLP

##### Highlighted Presentation

###### Session 3

###### Multi-Professional Topic

*The 3 R's of Ethical Decision-Making: Recognizing, Reporting and Resolving*, Theresa H. Rodgers, MA, EdSp, L-SLP, CCC-SLP

The advent of expanded scopes of practice in audiology and speech-language pathology has brought more visibility and autonomy to the professions, but it has also created an environment in which more complex, challenging decision-making is required of professionals. As a result, there is a need for practitioners to obtain practical experience in recognizing, reporting and resolving ethical dilemmas from both a professional and a regulatory board perspective. Featuring excerpts from hit songs, ethical situations/scenarios are analyzed by the audience to recognize potential violations and develop methodologies for resolution.

##### Highlighted Presentation

###### Session 4

###### SLP-Pediatric Topic

*Conducting Educationally Relevant Evaluations and Writing Educationally Relevant IEPs*, Perry Flynn, MEd, CCC-SLP

This session will support school based SLPs in becoming "assessment investigators" leaving the "testing technician"

model behind in order to conduct educationally relevant assessments. It will then help clinicians tie the information gained from educationally relevant assessments to functional IEPs that focus on South Carolina Educational Standards.

#### 8:30 am - 9:30 am

##### Highlighted Presentation

###### Session 5

###### Multi-Professional Topic

*Multi-State Telepractice--What's the Catch?*, Janice Brannon, MA

This session will focus on the policy aspects of performing telehealth with regard to licensure, regulations and reimbursement. We will look at current models for interstate licensure portability, model regulations and a brief review of reimbursement.

#### 10:00 am - 11:30 am

##### Highlighted Presentation

###### Session 6

###### SLP-Pediatric Topic

*Simultaneously Improve Speech Intelligibility and Establish Literacy Skills With Orthographic Instruction! - Part 1*, Keli Richmond, MS, CCC-SLP

Orthographic instruction (printed cues) simultaneously develops a strong literacy foundation while improving speech intelligibility, expanding language skills, and enhancing phonological awareness! Traditional techniques do not effectively activate the orthographic processor. Orthographic instruction activates the orthographic processor and synchronizes the four processors in the brain with printed cues. An active orthographic processor and the synchronization of the four processors in the brain are crucial for successful speech and literacy skills. Orthographic instruction applications are versatile. Orthographic instruction (printed cues) is a highly effective technique! With early intervention and implementation of orthographic instruction, children's speech and literacy skills advance quickly! And, workloads of clinicians and educators are lightened!

###### Session 7

###### SLP-Pediatric Topic

*ACTING OUT - Developing Social Competence Through Drama*, William Moylan, MS, CCC-SLP

#### 10:30 am - 12:00 pm

##### Highlighted Presentation

###### Session 8

###### Multi-Professional Topic

*Clinical Education: Changing Supervisory Roles*, Sue Hale, MS, CCC-SLP

Effective supervision is dependent on the acquisition of knowledge and skills for clinical education. This session will address supervision theory and the changing roles of supervisors in the current service-delivery environment. Participants will learn how to develop a plan for supervision as well as to improve skills in observation and analysis of student behaviors. Desirable

# SCSHA Convention Schedule

supervisory qualifications, ethical considerations and student skill development will be discussed. Participants will be given examples of supervisory challenges, and will interact to identify solutions.

**Session 9**            **SLP-Adult Topic**  
*Post Acute Care Essentials - The "Updated 411,"*  
Amber Heape, MCD, CCC-SLP; Jane Colmorgan,  
MA, CCC-SLP

**Session 10**          **Multi-Professional Topic**  
*Evidence-Based Practice Grand Rounds, SCSHA*  
Research Committee

## **1:30 pm - 2:30 pm**

**Session 11**          **SLP-Adult Topic**  
*Readability of Aphasia Materials for Clients and*  
*Their Families,* Regina Lemmon, PhD, CCC-SLP;  
Jasmine A. Smith

## **1:30 pm - 3:00 pm**

**Session 12**          **SLP-Pediatric Topic**  
*Simultaneously Improve Speech Intelligibility*  
*and Establish Literacy Skills With Orthographic*  
*Instruction! - Part 2,* Keli Richmond, MS, CCC-SLP

## **Highlighted Presentation**

**Session 13**          **Multi-Professional Topic**  
*The World is Not Flat: Preparing Speech-*  
*Language Pathologists to Serve Culturally and*  
*Linguistically Diverse Clients at Home and in the*  
*World,* Dolores Battle, PhD, CCC-SLP

The changing world economy and political realities have made us all aware of the inter-connectedness of all persons with disabilities. Because of changing demographics and an influx of children and adults from many parts of the world, the local community is now an international community. Cultural attitudes, health concerns and understanding of rehabilitation and education are culturally based. Cultural and linguistic diversity requires all speech-language pathologists to be familiar with the many ramifications of an increasingly diverse world. This session will provide an overview of the world health issues that impact persons with communication disorders around the world and in our communities at home and how these issues manifest in programs for persons with speech-language and hearing impairments. Issues from the World Health Organization International Classification of Functioning and case studies will be presented.

## **Highlighted Presentation**

**Session 14**          **SLP-Pediatric Topic**  
*Whole Body Connected: Take a Look - Part 1,*  
Sarah McCulloh, MSP, CCC-SLP; Erin Meece, MSP,  
CCC-SLP; Nikki Reid, MSR, OTR/L

This session will provide clinicians with in-depth knowledge and skills in the use of sensory integration techniques and how

it relates to and should be implemented into speech therapy sessions. Sensory integration disorders are usually treated by occupational therapist, but they often co-occur with speech and language impairments, so speech language pathologists should frequently be involved in treating children with sensory integration issues. Sensory techniques are key to any speech session whether the patient has a diagnosis of sensory integration disorder or not. All of the seven senses are involved in the production and understanding of speech and language and should, therefore, be used in treating children with speech and language delays.

## **2:00 pm - 3:00 pm**

**Session 15**          **SLP-Pediatric Topic**  
*Using the iPad as a Clinical and Educational Tool,*  
Jamy Claire Archer, MS, CCC-SLP

## **3:30 pm - 5:00 pm**

### **Highlighted Presentation**

**Session 16**          **Multi-Professional Topic**  
*Counseling: Communicating With Families,* Sue  
Hale, MS, CCC-SLP

Family members of individuals with communication challenges have specific counseling needs based on their roles within the family constellation. Participants will learn how to meet family members at their level of need in regard to support, understanding and information-sharing as they partner to assist the family in coping with the speech, language or hearing problems of a loved one.

### **Highlighted Presentation**

**Session 17**          **Multi-Professional Topic**  
*Getting Services Covered - The Changing Faces of*  
*Reimbursement,* Laurie Alban Havens, MA, CCC-SLP

This comprehensive session will provide information about recent reimbursement changes that are important to how speech-language pathology and audiology services are billed and provided. Included in the session are recent changes to third party payers, in light of some of the new Affordable Care Act (ACA) initiatives e.g., bundled provider payment, health insurance exchanges, new terminology, and essential health benefits. Special emphasis will be on South Carolina's changes to the Medicaid program with suggestions and discussion on negotiating with payers.

### **Highlighted Presentation**

**Session 18**          **SLP-Pediatric Topic**  
*Merging Phonemic Awareness and Phonics*  
*Within the RtI Model of Instruction,* Nancy Telian,  
MS, CCC-SLP

Within all three tiers of the response to intervention model of instruction, speech-language pathologists can be critical members of the literacy team. Over the years, SLPs have been involved with providing phonemic awareness training, many using auditory only techniques, however research clearly shows that when letter sounds are taught and letters are used within phonemic awareness activities, students achieve higher gains in reading and spelling. After providing information from the research

# SCSHA Convention Schedule

in the areas of literacy and Response to Intervention, participants will learn how to efficiently merge phonemic awareness and phonics instruction. Efficacy data and practical implementation instructions from the Lively Letters program will also be provided. Learn to utilize oral kinesthetic cueing, mnemonically embedded letter pictures, hand/body cues, imagery, and music to simultaneously train phonemic awareness, speech production skills, and phonics, as is strongly recommended in the research. Participants will be given practical instructions in how to use clinically proven intersensory techniques for training difficult letter sounds, and will be shown how to use mnemonic letter pictures within manipulation tasks to train sound blending and segmenting, as well as decoding and encoding of printed words for improved reading and spelling.

**Session 19**      **SLP-Pediatric Topic**  
*Whole Body Connected: Take a Look - Part 2*,  
Sarah McCulloh, MSP, CCC-SLP; Erin Meece, MSP,  
CCC-SLP; Nikki Reid, MSR, OTR/L

## 4:00 pm - 5:00 pm

**Session 20**      **SLP-Pediatric Topic**  
*5-Minute Kids: A Drill Based Program for  
Students With Speech Sound Disorders*,  
Susan Sexton, MA, CCC-SLP

## FRIDAY, FEBRUARY 17

### Events

7:15 am - 5:30 pm      Convention Registration  
7:30 am - 2:00 pm      Exhibits Open  
8:30 am - 10:00 am      Student Breakfast – **Sponsored by EBS Healthcare**  
9:30 am - 10:00 am      Refreshment Break/Door Prizes/Silent Auction  
11:30 pm - 2:00 pm      Annual Lunch  
**Guest Speaker: Daniel R. Boone, PhD, CCC-SLP**  
3:30 pm - 4:00 pm      Refreshment Break/Door Prizes/Silent Auction  
5:30 pm                      SCSHA Annual Business Meeting

### Friday's Sessions

#### 8:00 am - 9:30 am

#### Highlighted Presentation

**Session 21**      **SLP-Adult Topic**  
*End of Life: Peg Tube Decisions*, Denise  
Dougherty, MA, CCC-SLP, MFT

End of Life decisions are not cut and dry, black and white. There are many concerns regarding use of PEG or alternative hydration/nutrition systems. It is a difficult decision for families, and speech pathologists should assist in the education about benefits and burdens. This session will touch on the education process and identify numerous decision making tools that can help determine the course of action.

**Session 22**      **SLP-Pediatric Topic**  
*Strategic Interventions for Auditory Memory  
Training*, Beth Holland, MA, CCC-SLP

#### Highlighted Presentation

**Session 23**      **Multi-Professional Topic**  
*What the Rwandan Genocide, Holocaust and  
Natural Disasters Have Taught the World  
About Persons with Disabilities*, Dolores  
Battle, PhD, CCC-SLP

This session will provide an historical overview of cultural attitudes concerning disability in the world including the German Holocaust, the 1994 genocide in Rwanda, the earthquake in Haiti, the tsunami in Japan, the drought in Somalia and internal conflict in other countries and how they define and re-define cultural attitudes toward persons with disability. The first World Report on Disability from the World Health Organization as well as video clips from persons with disabilities from developing countries will be presented. The session will include opportunities for questions and discussion by participants.

#### 8:30 am - 9:30 am

#### Highlighted Presentation

**Session 24**      **SLP-Adult Topic**  
*A Work in Progress: Treatment of Primary  
Progressive Aphasia*, Charley Adams, PhD,  
CCC-SLP

#### Highlighted Presentation

**Session 25**      **Multi-Professional Topic**  
*Advocating for the Professions – Strategies for  
Member Success*, Theresa H. Rodgers, MA, EdSp,  
L-SLP, CCC-SLP

This session will focus on skill development in advocacy related to speech/language/hearing regulatory issues. Members of the ASHA Board of Directors will discuss issues targeted by ASHA Public Policy Agenda (PPA) and how speech-language pathologists and audiologists can get involved in legislative and regulatory advocacy efforts related to: Promoting financial aid and research funding opportunities to support recruitment and retention of master's and doctoral level students and clinicians in education and health care settings; Promotion of the autonomy of audiologists through direct patient access and comprehensive coverage of audiology services; and Support of increased funding of IDEA to establish effective service delivery and manageable caseloads; increase participation in early intervening and access to early intervention services and monitoring of effective utilization of federal stimulus funds for education.

#### 10:00 am - 11:30 am

**Session 26**      **SLP-Pediatric Topic**  
*Early Intervention: Oral Placement Therapy for  
Children With Down Syndrome*, Sara  
Rosenfeld-Johnson, MS, CCC-SLP

# SCSHA Convention Schedule

**Session 27**      **SLP-Pediatric Topic**  
*Medicaid and Supervision in the Public Schools,*  
Karen V. Senior, MS, CCC-SLP, EdD

**Session 28**      **SLP-Pediatric Topic**  
*Expanding Expression: A Multi-Sensory Tool for Improved Oral and Written Language,* Sara Smith, MS, CCC-SLP

## Highlighted Presentation

**Session 29**      **Multi-Professional Topic**  
*Biotechnology in the Treatment of Hearing Loss: Stem Cell and Gene Therapy – Part 1,* Mark Parker, PhD, CCC-A

This session will argue for a biological approach to the treatment of hearing loss. A new generation of research has emerged that uses biological tools, such as stem cell therapy and gene therapy, for the treatment of hearing loss in mammals. The current literature concerning the therapeutic application of stem cell and gene therapy for the treatment of hearing loss will be reviewed. The ethical and clinical implications will be discussed.

## 10:30 am - 11:30 am

**Session 30**      **SLP-Pediatric Topic**  
*Many Approaches, One Goal: Planning for Different Modes of Communication,* Jamy Claire Archer, MS, CCC-SLP

## 2:00 pm - 3:30 pm

**Session 31**      **SLP-Adult Topic**  
*Building the Bridge Between Accent Modification Training and Public Speaking: Overlapping Training for the SLP,* Cathy Runnels, MS, CCC-SLP

Frequently, professional adults seeking accent modification services do so in order to improve overall public speaking and delivery impact for career-related presentations. The SLP seeking to support these clients must utilize principles of accent modification and public speaking/vocal delivery in order to effectively assure carryover of desired behaviors. This session will address the key elements involved in training for accent modification and vocal delivery/presentation skills, and how combining elements of each will optimize supports for professional adults seeking accent modification services.

**Session 32**      **SLP-Adult Topic**  
*A Team Approach to Therapy in Post-Acute Care,* Amber Heape, MCD, CCC-SLP; Margaret Tyner, OTR/L

**Session 33**      **Multi-Professional Topic**  
*Biotechnology in the Treatment of Hearing Loss: Stem Cell and Gene Therapy – Part 2,* Mark Parker, PhD, CCC-A

## Highlighted Presentation

**Session 34**      **SLP-Pediatric Topic**  
*Intervention for Speech Sound Disorders: Beyond the Basics - Part 1,* Carol Koch, EdD, CCC-SLP

Children with speech sound disorders (SSDs) comprise a large portion of the caseloads for speech-language pathologists working with pre-school and school-age children. Intervention for speech sound disorders is designed to improve effective communication and to reduce the impact of the disorder on a child's academic performance and social skill development (McCormack, McLeod, McAllister, & Harrison, 2009). Effective intervention strategies can be implemented to enhance communication skills, and provide children with an opportunity to achieve their full potential. Speech-language pathologists must determine the most effective and efficient intervention approach from a wide array of available approaches. The challenge is to balance the best available evidence from research literature with the clinical expertise of the clinician to make intervention decisions designed to achieve the best outcomes for all children. This two-part session will explore a variety of intervention approaches and considerations for how to best design an intervention plan.

## Highlighted Presentation

**Session 35**      **SLP-Pediatric Topic**  
*Johnny Reads CVC Words: Now What? Advanced Word Reading and Spelling,* Nancy Telian, MS, CCC-SLP

As experts in phonology and language, SLPs can contribute in a number of ways, directly or indirectly, to help struggling readers quickly close achievement gaps by going beyond phonemic awareness and CVC words. A review of the research will be followed by practical, "take-away" methods proven to be effective, including several from the Lively Letters program. Participants will learn methods for helping students read and spell words containing difficult letter sounds such as short vowels, vowel digraphs, and r-controlled vowels. The six syllable types will be also discussed. Strategies for decoding words with consonant blends, with specific training preventing sequencing errors, will be demonstrated. Participants will also learn proven ways for reading and spelling words with multiple syllables and morphological endings. Structural analysis techniques for simultaneously teaching reading, spelling, and meaning of multisyllable words consisting of prefix, stems and suffixes will also be addressed. In addition, participants will be presented with proven strategies for teaching semantically abstract and phonetically irregular sight words. They will also be exposed to methods for improving spelling skills using a variety of clinically proven methods, including those that address phonemic awareness and phonetic spelling, orthographic spelling, and the use of the English spelling rules, such as when to use 'c,' 'k,' or 'ck.' Finally, several techniques will be shared for promoting word reading automaticity and oral reading fluency, particularly for those with rapid naming weaknesses. Efficacy data from the research in the field of reading, and from Lively Letters, will be shared.

# SCSHA Convention Schedule

## 4:00 pm - 5:00 pm

- Session 36**      **SLP-Pediatric Topic**  
*Apps and the SLP: Assessment and Intervention*,  
Beth Holland, MA, CCC-SLP
- Session 37**      **SLP-Pediatric Topic**  
*Stop the Screaming! Therapy Ideas for Toddlers &  
Preschoolers With Autism*, Sally Asquith, MS, CCC-SLP
- Session 38**      **Multi-Professional Topic**  
*Cultural Competency in SLP: Through Their Eyes*,  
Gina Crosby-Quinatoa, MSP, CCC-SLP

## 4:00 pm - 5:30 pm

- Session 39**      **SLP-Pediatric Topic**  
*Intervention for Speech Sound Disorders: Beyond  
the Basics - Part 2*, Carol Koch, EdD, CCC-SLP

### Highlighted Presentation

- Session 40**      **SLP-Pediatric Topic**  
*Educationally Relevant Service Delivery: Tying  
SLP Services to the Core Content Standard*, Perry  
Flynn, MEd, CCC-SLP

This session will focus on providing school-based services in the Least Restrictive Environment (LRE). It will help SLPs connect speech-language intervention to curriculum in order to achieve functional, educationally relevant outcomes for students.

## SATURDAY, FEBRUARY 18

### Events

- 8:00 am - 12:30 pm    Convention Registration  
10:00 am - 10:30 am    Refreshment Break

### Saturday's Sessions

## 8:30 am - 10:00 am

### Highlighted Presentation

- Session 41**      **SLP-Adult Topic**  
*Aphasia Advocacy: Tools for Community  
Outreach, Education and Increased Awareness -  
Part 1*, Ellayne Ganzfried, MS, CCC-SLP

There are more than one million people with aphasia in the US yet the lack of awareness and information about aphasia is as devastating as the disorder itself. A critical goal is to encourage the development of community resources, advocacy strategies and support networks. Increased awareness and advocacy tools need to be incorporated into the assessment and intervention process; ideas for unique programs and implementation of community education tools will be addressed. Future implications for helping people with aphasia move forward with their lives and suggestions for local initiatives will be discussed. Participants will have the opportunity to share ideas.

### Highlighted Presentation

- Short Course 1**      **SLP-Pediatric Topic**  
*Identifying and Assessing Infants and Toddlers At-  
Risk for Autism Spectrum Disorders - Part 1*,  
Elizabeth Crais, PhD, CCC-SLP

See page 10 for more information on Dr. Crais and this Short Course.

## 9:00 am - 10:30 am

### Highlighted Presentation

- Session 42**      **SLP-Pediatric Topic**  
*Pediatric Dysphagia and Feeding Disorders: A  
New Role for the School-Based SLP*, Kelly Hall,  
PhD, CCC-SLP

There is an increasing number of students with complicated medical histories that requires dysphagia management in the school setting. Although services for health-related disorders that affect the ability of the student to access educational programs and participate fully are mandated by IDEA and the Rehabilitation Act, there remains an uncertainty about the educational relevance of dysphagia management. The purpose of this session is to address the issues, models and procedures for managing students with swallowing and feeding disorders in the schools.

### Highlighted Presentation

- Short Course 2**      **SLP-Pediatric Topic**  
*Creating Proficient Readers and Comprehenders -  
Part 1*, Alan Kamhi, PhD, CCC-SLP

See page 10 for more information on Dr. Kamhi and this Short Course.

## 10:15 am - 11:45 am

- Session 43**      **SLP-Adult Topic**  
*Aphasia Advocacy: Tools for Community  
Outreach, Education and Increased Awareness -  
Part 2*, Ellayne Ganzfried, MS, CCC-SLP
- Short Course 1**      **SLP-Pediatric Topic**  
*Identifying and Assessing Infants and Toddlers At-  
Risk for Autism Spectrum Disorders - Part 2*,  
Elizabeth Crais, PhD, CCC-SLP

## 10:45 am - 12:15 pm

### Highlighted Presentation

- Session 44**      **SLP-Pediatric Topic**  
*Management of Child Voice Disorders*, Kelly Hall,  
PhD, CCC-SLP

Children with voice problems present a particular challenge for the school-based SLP. They need careful appraisal of the problem, a detailed diagnosis and a comprehensive treatment plan. This session will focus on typical problems resulting from phonotrauma as well as other medical conditions that affect vocal production. We will discuss current issues and obstacles of management of voice disorders in school-aged children.

- Short Course 2**      **SLP-Pediatric Topic**  
*Creating Proficient Readers and Comprehenders -  
Part 2*, Alan Kamhi, PhD, CCC-SLP

# SCSHA Convention Highlighted Speakers



## **Dolores Battle, PhD, CCC-SLP**

Dr. Dolores Battle is Professor Emeritus of Speech-Language Pathology at Buffalo State College where she has been employed for the past 40 years. Dr. Battle is a Fellow in the American Speech-Language-Hearing Association

and is also former president of both the American Speech-Language-Hearing Association and the International Association of Logopedics and Phoniatrics. She is a member of the International Issues Board of ASHA and the Steering Committee for Special Interest Division 17 on Global Issues. She is a widely published scholar in the area of communication disorders in international and culturally and linguistically diverse populations.

## **Janice Brannon, MA**

Ms. Janice Brannon is the Director of State Special Initiatives in the Government Relations and Public Policy Division at the American Speech-Language-Hearing Association (ASHA). She provides lead support on ASHA's government relations response to telehealth activities and state licensure issues. Previously Ms. Brannon was a participant in the White House Working Group on Telemedicine, contributed to the discussion on the Nurse Licensure Compact while employed by the American Nurses Association and recently became co-chair of the ATA Inter-professional Work Group on Licensure Portability, Telerehabilitation SIG. Ms. Brannon's 20 years' experience in government relations has led her from the halls of Capitol Hill to offices of a County Executive to President of her own consulting firm and director of state relations for a number of health care provider organizations. She has presented in numerous venues nationwide on advocacy and telehealth and has authored many articles in her field. Ms. Brannon received her BS from Towson University and her graduate degree from the University of Maryland.



## **Denise Dougherty, MA, CCC-SLP, MFT**

Ms. Denise Dougherty is a speech-language pathologist with more than 34 years of experience. Ms. Dougherty owns and operates a private practice in Indiana, PA, where she conducts therapy with both children and adults. She provides therapy for clients throughout the United States and overseas. Denise served as a consultant for The Arijah Children's Foundation in Anguilla, BWI, providing evaluations and therapy for special needs children involved with the Foundation. She is currently a board member and President of the American Academy of Private Practice in Speech Pathology and Audiology (AAPPSPA), serves as the AAPPSPA liaison for ASHA Health Care Economics Committee and received the Academy's 2007 Honor Award for her achievements. Ms. Dougherty is a member of the Technical Experts Panel for Quality of Insights of Pennsylvania, working on initiating quality measures for CMS to improve effectiveness, efficiency, economy and quality of services delivered to Medicare beneficiaries. She received her bachelor's degree in Communication Disorders from Marywood University in Scranton, Pennsylvania; a master's degree in Communication Disorders from St. Louis University; and has completed postgraduate courses at Johns Hopkins University and the University of Phoenix. Ms. Dougherty is certified in VitalStim® therapy and is a VitalStim® instructor, has completed additional training in oro-myofunctional therapy, is a member of the Pennsylvania Speech-Language-Hearing Association, the American Speech-Language-Hearing Association and has received numerous ASHA ACE Awards.



## **Perry Flynn, MEd, CCC-SLP**

Mr. Perry Flynn is the Consultant to the North Carolina Department of Public Instruction and an Associate Professor at University of North Carolina Greensboro. He is the Vice-Chair elect of the American Speech-Language-Hearing Association Advisory Council.



## **Ellayne Ganzfried, MS, CCC-SLP**

Ms. Ellayne S. Ganzfried is a speech-language pathologist and the Executive Director of the National Aphasia Association. She is Past President of the New York State Speech-Language-Hearing Association (NYSSLHA),

Long Island Speech Language Hearing Association (LISHA) and the Council of State Speech-Language Hearing Association Presidents (CSAP) and remains active in these associations. Ellayne is a Fellow of the American Speech-Language-Hearing Association (ASHA). She was a site visitor for ASHA's Council on Academic Accreditation (CAA) and a practitioner member of the CAA for four years. She has served on the Steering Committee for ASHA's Special Interest Division 11-Administration and Supervision. Ellayne has written articles and presented regionally and nationally on a variety of topics including aphasia, rehabilitation and leadership skills.



## **Sue Hale, MS, CCC-SLP**

Ms. Sue Hale is Director of Clinical Education and Assistant Professor in the Department of Hearing and Speech Sciences in the Vanderbilt University School of Medicine. An ASHA Fellow, she was the 2009 ASHA

President with extensive previous service on councils and committees in the areas of clinical standards and professional ethics. She served as ASHA's Vice President for Quality of Service in Speech-Language Pathology from 2002-2004. She teaches and lectures in the areas of professional ethics, counseling, and clinical supervision. She received her bachelor's and master's degrees from the University of Mississippi.



## **Kelly Hall, PhD, CCC-SLP**

Dr. Kelly Hall is the Director of Graduate Studies at University of North Carolina Greensboro where she teaches courses in dysphagia, voice, and neurology. She is also school-based SLP and is employed by Pediatric Speech and Language

Services Inc to provide therapy and to students in the Rockingham and Montgomery County School Districts in North Carolina.



## **Laurie Alban Havens, MA, CCC-SLP**

Laurie Alban Havens joined the ASHA staff in October 2010 as director of private health plans and Medicaid advocacy and has experience both as a reimbursement and coverage expert and as a speech-language

pathologist. She is the ASHA liaison to the HAB coalition – an advocacy group dedicated to improving habilitation services coverage. Before joining the ASHA National Office, she was corporate compliance officer for a rehabilitation and skilled nursing home system. Prior to that she was a project manager for a corporation specializing in national Medicare and Medicaid consultation, a project coordinator for CMS, a director for clinical and reimbursement regulations for a rehabilitation contractor, a skilled nursing home administrator, and a speech-language pathologist in the schools.

# SCSHA Convention Highlighted Speakers



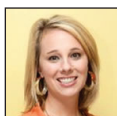
## **Carol Koch, EdD, CCC-SLP**

Dr. Carol Koch currently serves as the Department Chair and Assistant Professor for the Department of Communication Sciences and Disorders at Rockhurst University. She has more than 20 years of clinical experience working with young children with speech sound disorders, apraxia of speech, and autism spectrum disorders.



## **Sarah McCulloh, MSP, CCC-SLP**

Ms. Sarah McCulloh is the owner of McCulloh Therapeutic Solutions, a family-based pediatric therapy practice, providing speech-language therapy services to children from birth through adolescence. Sarah's strengths are in fluency disorders, Autism Spectrum Disorders, and Reading Rehabilitation through the Lindamood Bell LiPS program. Her experience in collaborating with pediatric occupational therapy has strengthened her practice to integrate a multi-sensory approach to maximize outcomes for children. Her practice covers three pediatric clinics, five private schools, one public school, and a home health division, all in upstate SC.



## **Erin Meece, MSP, CCC-SLP**

Ms. Erin Meece is a pediatric speech-language pathologist who works primarily with children with Autism Spectrum Disorders, ADD, ADHD, and Sensory Integration Disorder. Erin works closely with Occupational Therapists when treating her patients, and has an extensive background in Applied Behavior Analysis. Erin is the Greenville Clinic Director of McCulloh Therapeutic Solutions.



## **Mark Parker, PhD, CCC-A**

Dr. Parker holds a MS degree in Speech and Hearing Sciences from Portland State University, a Clinical Certificate of Competence in Audiology (CCC-AUD) for the Association of Speech Language Pathology and Audiology, and a PhD in Neuroscience from LSU Health Sciences Center. He is currently the Director of Audiology at St. Elizabeth's Medical Center, which is a teaching hospital of Tufts University School of Medicine, a research associate at the Massachusetts Eye and Ear Infirmary and a Lecturer at Harvard Medical School.



## **Nikki Reid, MSR, OTR/L**

Ms. Nikki Reid is a graduate of Medical University of South Carolina with a master's degree in Rehabilitation-Occupational Therapy. She has worked in a variety of settings with both children and adults, but her passion lies in the treatment of sensory integration disorders. She is a Sequential Oral Sensory (SOS) trained, feeding therapist and trained provider of The Listening Program® (TLP). Nikki is currently at the ATS KIDS-Parkway location.



## **Keli Richmond, MS, CCC-SLP**

Ms. Keli Richmond is a speech-language pathologist specializing in early literacy development. She has more than 14 years experience in the speech and literacy disciplines. She is the author of *Literacy Speaks!*, a comprehensive program focusing on speech and literacy skills. Keli is the recipient of the Indiana Speech-Language-Hearing Association Professional Achievement Award.



## **Theresa Rodgers, MA, CCC-SLP**

Theresa H. Rodgers, Chief Administrative Officer for St. John the Baptist Parish and a speech-language pathology consultant, is currently Secretary of the National Council of State Boards of Examiners for Speech-Language Pathology and Audiology (NCSB) and is a former NCSB President. She is also a member of the Louisiana licensure board, having served five terms including two years as Chairperson, and is also a member of the CGFNS International Commission on Health Professions SLP/Audiology Professional Standards Committee. Theresa is an ASHA Fellow and a member of ASHA's Continuing Education Board as well as the Speech-Language Pathology Advisory Council. She is a former Chair of ASHA's Council for Clinical Certification, former LSHA President, and former President of the Council of State Speech-Language-Hearing Association Presidents (CSAP). In 2012, she will begin a term on the ASHA Board of Directors as the Vice-President of Government Relations and Public Policy.



## **Cathy Runnels, MS, CCC-SLP**

Ms. Cathy Runnels is president of Accent On Speech, a practice specializing in the public speaking and accent modification needs of adults, and speech-language learning needs of students. She conducts training workshops for governments, corporations and non-profit organizations in the Washington, D.C. metro-plex and beyond. Ms. Runnels has conducted workshops at RTNDA (Radio, Television, and News Directors Association) and NABJ (National Association of Black Journalists) Conventions. A native of Dallas, Texas, Ms. Runnels attended Chapman College and Syracuse University for her undergraduate and master's degrees. She is presently a faculty associate at Johns Hopkins University; a national consultant for Western Psychological Services Publishing, Inc. Ms. Runnels is a Past-Chair of the National Black Association for Speech, Language and Hearing.



## **Nancy Telian, MS, CCC-SLP**

Ms. Nancy Telian is the author of the Lively Letters program, and co-director of Reading with TLC. Specializing in diagnosis and treatment of reading disorders. Nancy has 32 years of experience. Since 1990 she has empowered speech-language pathologist to contribute their expertise to the literacy team. Nancy was a master trainer for the MA Department of Education NCLBA teacher training program and is on the adjunct faculty at MGH Institute of Health of Health Professions. Known for her warm, humorous style, she speaks often at national and state speech-language-hearing association conventions.

# SCSHA Convention Special Events

**Door Prizes** will be given out at each break in the Exhibit Hall. Prizes that are not claimed during the Convention will be raffled off during the last break on Friday.

## THURSDAY, FEBRUARY 16

### Lunch n' Learn: SCSHA Member Caucuses

12:00 pm - 1:00 pm

(Pre-purchased tickets are required. See the Convention registration form.)

SCSHA wants to hear your voice! Come enjoy a working lunch and discuss relevant issues in your work environment with your colleagues and assist in affecting positive change by creating short and long term goal(s) for SCSHA to work toward the following fields: Health Care; Private Practice; Schools; University; Students and Audiology. The caucus mechanism is designed to provide an opportunity for convention participants to help the SCSHA Board of Directors develop goals for the year(s) ahead.

This is your opportunity to make your work-place professional concerns known. Each caucus will be lead by a Board Member, Committee/Task Force Chairperson or appointee and together each caucus group will develop two-three main issues with ideas for a plan toward resolution. Each caucus leader will present a written summary of the group's issues to the Board and membership. This assembly will allow the SCSHA Board to have a better understanding of the needs of the members and develop a more structured approach to address these needs. Caucus meetings are open to all convention attendees and those who are interested in becoming more involved with SCSHA leadership are highly encouraged to attend.

### Past President's Luncheon

12:00 pm - 1:30 pm

### Alumni Receptions

6:30 pm - 8:00 pm

## FRIDAY, FEBRUARY 17

### Student Breakfast

8:30 am - 10:00 am

Sponsored by EBS Healthcare

### Annual Luncheon

#### Our Two Professions: Past and Future

11:30 am - 2:00 pm

(Pre-purchased tickets are required. See the Convention registration form.)

### Keynote Address



#### Daniel R. Boone, PhD, CCC-SLP

SCSHA is honored to have Dr. Daniel R. Boone speaking to us at SCSHA's annual awards luncheon on leadership and advocacy in the professions of speech-language pathology and audiology. Don't miss this opportunity to

hear this dynamic and knowledgeable speaker and see your colleagues be honored for their contributions to the profession.

As an ASHA member for 60 years, Dr. Boone has seen tremendous growth in numbers, knowledge acquisition, dramatic differences in client populations, changes in delivery patterns, and growth of instrumentation. Early clinical intervention was primarily in university clinics and public schools. Audiology became more dominant in medical settings. Speech pathology services in hospitals and medical settings began with aphasia and dysarthria with little emphasis given to dysphagia. A dramatic change in instrumentation ranged from early wax-recordings to hand-held computers with remediation apps. The effects of evidence based practice and severe financial limitations will be presented and what we as SLPs and Audiologists can do about them.

With the publishing of the 8th Edition of *The Voice and Voice Therapy* in 2010, Dr. Daniel R. Boone celebrated his 55th year as a speech-language pathologist. Dr. Boone has taught at Case Western Reserve University, University of Kansas Medical Center, University of Denver and the University of Arizona, where he is now Professor Emeritus. For his first 20 years as an SLP, he worked extensively with cerebral palsy and aphasia patients. Since the first publication of his voice text in 1971, he has been primarily identified by his writings in voice disorders and their remediation. Dr. Boone is a former President of the American Speech-Language-Hearing Association and holds both Fellowship and Honors of that organization. He is the author of 15 professional books, several book chapters and monographs, and more than 100 refereed journal publications. Dr. Boone is well known for his many lecture and workshop presentations. Dr. Boone is best known for his love of his students and turning them "on" to the excitement of clinical speech pathology practice.

### Last Break for Door Prizes

3:30 pm - 4:00 pm

Close of the Silent Auction, Winners Posted by 4:30 pm.

### SCSHA Annual Business Meeting

5:30 pm

Join the SCSHA Executive Board for the Annual Business Meeting. This will be your opportunity to share in the success and accomplishments of SCSHA for the past year, and learn what is in store for SCSHA during the year 2012.

## SCSHA Silent Auction – SHOP FOR A CAUSE!



The 2012 SCSHA Silent Auction will be a two-day event! The auction will be held on Thursday, February 16 and Friday, February 17 and is scheduled to close at 4:00 pm on Friday. All proceeds will benefit the SCSHA Foundation and are tax deductible. Bring your checkbooks!

### How you can contribute:

- Therapy Materials
- Games
- Artwork
- Clothing Accessories
- Cosmetics
- Food
- Jewelry
- And More!

We appreciate those of you who have participated in making the **SCSHA Silent Auction** a huge success in the past. Thanks for your continued support.

Donating is made easy, by using one of the following contact methods:

- ▶ **SCSHA Office at [SCSHA@scsha.com](mailto:SCSHA@scsha.com)**
- ▶ **Louise Jackson, 2012 SCSHA Convention Co-Chair: [ljack52@bellsouth.net](mailto:ljack52@bellsouth.net)**
- ▶ **SCSHA website, [www.scsha.com](http://www.scsha.com) – click on the Silent Auction Donation Form**

## Short Courses

### SHORT COURSE 1

#### *Identifying and Assessing Infants and Toddlers At-Risk for Autism Spectrum Disorders*

Recent evidence indicates that behavioral characteristics of ASD can be seen in children as young as 12-15 months of age. This short course will highlight the research findings and implications for practice of efforts to identify infants, toddlers, and preschoolers with or at-risk for ASD. The focus will be on research in support of early screening; tools and issues related to early screening and diagnosis; and working closely with families and other caregivers in early identification. Videos and participant activities will be used to enhance application.



**Elizabeth Crais, PhD, CCC-SLP**, is a Professor in the Division of Speech and Hearing Sciences at the University of North Carolina at Chapel Hill School of Medicine. Dr. Crais has been active within early intervention for over 35 years, first as a practicing speech-language pathologist, and then as a university professor, clinical supervisor, and researcher. She is the Co-Principal Investigator of a project focused on home-based intervention and an Investigator on a preschool project for children with or at-risk for autism. Her research focuses on the early identification of and intervention with infants, toddlers, and preschoolers with or at-risk for ASD, as well as the implementation of family-centered assessment practices.

### SHORT COURSE 2

#### *Creating Proficient Readers and Comprehenders*

In the first part of this session, information will be provided about the role and responsibilities of SLPs for working with children with language and reading disabilities. Information will be provided about the knowledge and processes necessary for becoming proficient readers and comprehenders. In the second part of the session, procedures and strategies will be presented to improve word recognition, reading fluency and listening/reading comprehension abilities in school-age children.



**Alan Kamhi, PhD, CCC-SLP**, is a Professor in the Department of Communicative Sciences and Disorders at the University of North Carolina-Greensboro. His early research focused on linguistic and cognitive abilities of children with specific language impairments (SLI) and mental handicaps. Later research focused on language-learning disabilities, culminating in a book co-edited with Hugh Catts, on language and reading disabilities. The third edition of this book recently came out. He also co-edited a book on clinical decision making in developmental language disorders with Julie Masterson and Kenn Apel.

## Handouts

### **SPEAKER HANDOUTS WILL BE FOUND ON THE SCSHA WEBSITE**

Speaker Handouts will be available on the SCSHA website two weeks prior to the Convention for your review and printing.

**Handouts will not be available for purchase at the Convention.**

Please visit the website prior to attending the Convention to obtain your handouts. If you have problems accessing the SCSHA website, [www.scscha.com](http://www.scscha.com), for handouts, contact the SCSHA Office at either 888-729-3717 or [scscha@scscha.com](mailto:scscha@scscha.com).

**Short Course Handouts**, will only be available for those individuals who have paid and registered for the Short Courses. Handouts for the Short Courses will be distributed at the Convention and will not be posted on the website.



### **Convention Updates, Details and Vendors on the SCSHA Website**

You can view session abstracts and speaker information on the SCSHA website, [www.scscha.com](http://www.scscha.com). Updates and changes to the Convention Schedule will also be announced on the website. See which Exhibitors and Recruiters will be at this year's Convention prior to attending. All vendors will be listed on the SCSHA website.



## Reminders

- **Early Registration Deadline for the SCSHA Convention is Thursday, January 12, 2012.**
- **Hotel group room rate deadline is Wednesday, January 25, 2012.**



SCSHA  
701 Gervais Street, Ste. 150-206  
Columbia, SC 29201

Presorted  
Standard  
U.S. Postage  
**PAID**  
Pittsburgh, PA  
Permit #2191

## 2012 Convention Registration!

### Hotel Information

Special group rates have been obtained for the 2012 Annual Convention at the Kingston Plantation Embassy Suites Hotels. Special group rates will only be honored by the Embassy Suites, based on availability, until January 25, 2012. Please make your reservations early! The group room rates have been obtained as follows:

One Bedroom Oceanview Guestroom Brighton	\$109
Oceanview Suite, Embassy Suites	\$130
Two Bedroom Plantation Villa	\$149
Two Bedroom Oceanview Condo	\$159
Two Bedroom Oceanview Condo Brighton	\$174

Reservations may be made by calling 800-876-0010. To receive the group discount, identify yourself as being with SC Speech-Language-Hearing Association. For additional information on the hotel accommodations, please visit, [www.kingstonplantation.com](http://www.kingstonplantation.com).



### JOIN SCSHA on TWITTER

SCSHA wants to keep you up-to-date on  
Convention information with Twitter.

Sign up to follow us at [www.twitter.com/SCSHA](http://www.twitter.com/SCSHA)

SCSHA "tweets" will provide pre-Convention updates,  
as well as any on-site changes or reminders.

### You Can Make A Difference ... Become a SCSHA Foundation Member

The SCSHA Foundation is a non-profit organization that is operated exclusively for promoting education and research in the field of speech-language pathology and audiology. Funds received into the foundation may be donated in honor of an individual(s) and may be awarded specifically to an individual(s) requested. The Foundation has supported education and research by providing an annual stipend to the association's Student of the Year at the annual SCSHA Convention and offering two scholarships to students who are currently studying in the field of speech-language pathology and audiology. Members joining as Foundation Members are entitled to a \$25 tax-deduction for their donation to a 501(c)(3) public foundation.

## Continuing Education



The South Carolina Speech-Language-Hearing Association is approved by the Continuing Education Board of the American Speech-Language-Hearing Association (ASHA) to provide continuing education activities in

speech-language pathology and audiology. See course information for number of ASHA CEUs, instructional level and content area. ASHA CE Provider approval does not imply endorsement of course content, specific products or clinical procedures.

This course is offered for up to 1.75 ASHA CEUs (various levels, professional area)